

Connection of V.24 devices by using ISDN dial-up lines

- Remote management connection or backup services over ISDN
- Data rate: Up to 128kbps
- Interface: 1 x V.24/V.28 or 1 x V.24/V.28 with 2 x POTS
- Line: ISDN dial-up lines (ISDN S0)
- Security by PAP/CHAP, password protection, call-back function (optional)
- B-channel protocol: MLPPP and transparent HDLC
- Available as compact stand-alone unit

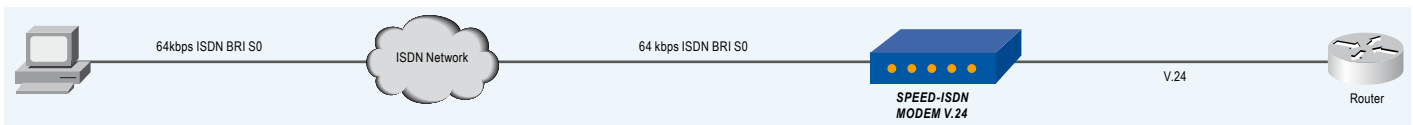


Remote management of network devices by using ISDN dial-up lines

The SPEED-ISDN MODEM enables conversion of the widely-used V.24 interface to an ISDN dial-up line.

In addition the ISDN modem is perfectly suited for service providers, carriers or enterprises by realizing an ISDN backup or configuration con-

nection to a remotely installed device to increase reliability.

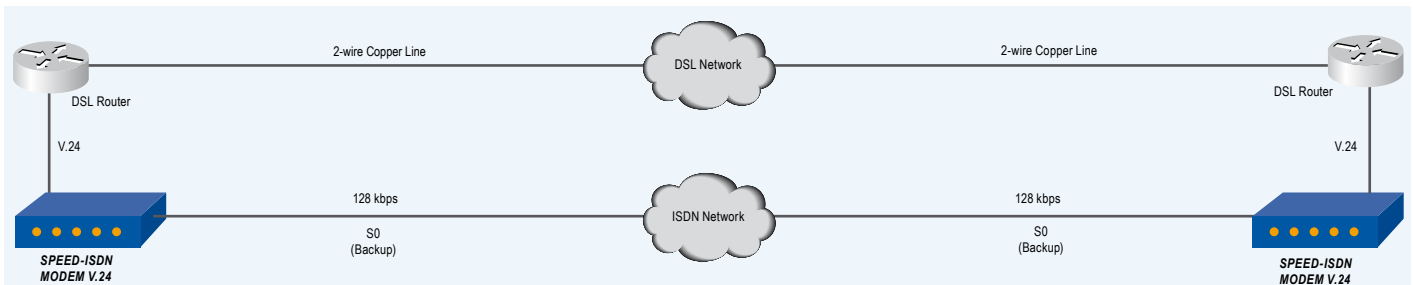


Backup of DSL connections via ISDN dial-up lines

The device behaves like an analogue modem and does not request certain driver for con-

nected devices. The SPEED-ISDN Modem V.24 can be configured by a service center remote via

ISDN. It is available as stand alone version.



Specifications:

General

- LED indicators: Status power, ISDN, L1, L2, synch, B-channels, DCD, DTR, Rx, Tx (B1, B2)
- Dimensions (H x W x D): 22 x 70 x 130mm
- Power supply: 230 V AC using external adapter

ISDN dial-up line port

- ISDN interface: I.430 (ISDN BRI S0) acc. to standard CCITT I.430 (2B1D)
- Data rate: Up to 128kbps
- Connector: RJ45
- Dialing method: Hayes dialing
- Optional: V.25bis asynchronous, X.3-PAD
- Hayes dialing
- Optional: V.25bis asynchronous, X.3-PAD
- B-channel protocols: V.110/ECMA102, V.120, X.75, HDLC transparent (PPP synchronous to asynchronous) and MLPPP
- D-channel protocols: DSS1, X.31 (optional)

Client port

- Interface: V.24/V.28 (DB9, female)
- Data rate: 128kbps asynchronous, half and full duplex

Security

- Password protection
- User authentication: PAP/CHAP, MD5
- Optional: Call-back function

Management

- Configuration: Locally using asynchronous terminal/PC or remotely by ISDN

+49 (0) 6103 / 83 4 83 - 180

info@pandacomdirekt.de

www.pandacomdirekt.de