

# 24-port SHDSL IP DSLAM

Up to 24 DSL subscribers connected over IP



**NEW**

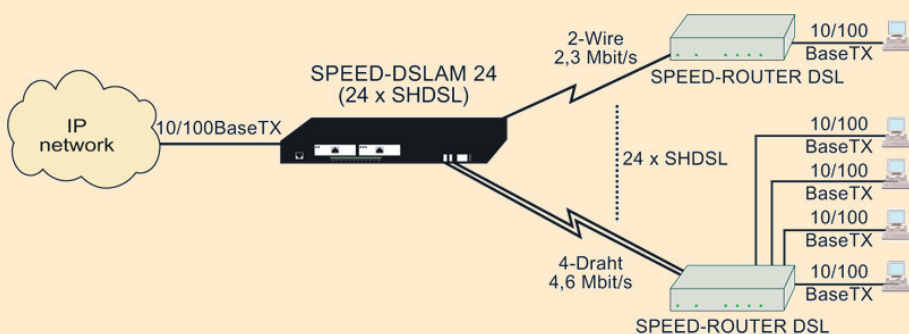
The SPEED-DSLAM 24 is especially suited for an easy and cost-effective concentration of multiple SHDSL links over IP. Up to 2.3Mbps data rate can be transmitted over each 2-wire DSL connection. The products SPEED-DSL 2.3 and SPEED-ROUTER DSL can be used as appropriate CPEs to connect the remote locations with the central DSLAM. Remote inband configuration of the SPEED-ROUTER DSL can be realised via the SPEED-DSLAM 24 that reduces time and cost-consuming employment of on-site personnel at the remote locations.

The integration of Quality of Service (QoS) parameter like DiffServ and VLAN support (port and tag-based) enables multifunctional applications like prioritised VoIP communication.

The SPEED-DSLAM 24 is available in a compact 1U housing for the integration in a 19" rack to be managed via HTTP, Telnet or SNMP.

## Example of use:

### Point-to-multipoint connection using 2-/4-wire copper lines



## Table of distance:

Wire diameter	data rate									
	2-wire	144kbps	272kbps	400kbps	528kbps	784kbps	1.04Mbps	1.55Mbps	2.06Mbps	2.92Mbps
0.60 mm*		7.3km	6.15km	5.91km	5.60km	5.12km	4.87km	3.90km	3.71km	3.44km

\* Reference values measured under ideal conditions

- Up to 24 or 12 subscribers connected by using 2- or 4-wire copper lines
- Uplink: 2 x 10/100BaseTX
- Plug & play
- Web and SNMP management
- Port-based VLAN and QoS
- Auto-configuration of CPEs

## Technical information:

### General

- LED indicators: Power, SHDSL, sync, ACT, Ethernet
- Operating temperature: 0°C - 50°C
- Humidity: 5% - 95% (non-condensing)
- Dimensions (H x W x D): 44 x 432 x 361 mm
- Power supply: 100 - 240 V AC, 50 - 60Hz

### IP uplink

- Interfaces: 2 x 10/100BaseTX
- Transparent bridging (RFC 1438)
- 32.000 MAC addresses
- MAC address filtering and limiting
- Flood control
- Spanning Tree protocol (802.1d)
- IP multicast (IGMP snooping)

### DSL ports

- Standard: G.991.2 (TC-PAM)
- Line: 2-wire and 4-wire copper lines (RJ11)
- Data rate: 384kbps - 4.6Mbps in 128kbps steps
- Distance: Up to 7 km

### VLAN

- Port-based VLAN
- IEEE 802.1Q tag-based VLAN

### QoS

- Classification of traffic:
  - Port-based
  - Tag-based
  - DS/TOS
  - TCP/UDP logic ports

### Management

- Integrated console port RS232 (DB9)
- Integrated SNMPv2 agent, Telnet management
- Web-based management
- Remote CPE configuration of SPEED-ROUTER DSL