

Modular fiber optic multiplexer

Data, voice and LAN services using fiber optic lines



NEW

The SPEED-MUX FO155 is equipped with 2 slots for the integration of devices with Fast Ethernet, G.703/G.704 or X.21/V.35 interfaces in order to multiplex these on a fiber optic line with a maximum data rate of 155Mbps. The optical SFP uplink enables flexible operation with both Multimode or Singlemode fiber optic lines, and C/DWDM wavelengths. The fiber-saving transmission by using only a single fiber can be realised by means of Single Fiber SFPs.

The SPEED-MUX FO155 can also be used as an uplink module for further SPEED products so that modules (ISDN BRI S₀, X.21, V.35, G.703/G.704) can be transmitted over the same fiber optic line using the additional internal 2Mbps bus. Thus the multiplexer is perfectly suited for Ethernet high-speed connection as well as for the consolidation of low-speed services, like for example n x 64kbps of X.21 interfaces. The two Ethernet modules enable the optimal utilization of the STM-1 bandwidth up to 147Mbps. The modular design of the product ensures customers to have a high-level of investment protection and enables a flexible adaptation of interfaces for changing requirements.

The SPEED-MUX FO155 can be installed flexibly in a 1-slot or 4-slot SPEED-RACKHOUSING and can be integrated in the 19"-rack SPEED-SHELF. The SPEED-SHELF provides the ability to optionally monitor the SPEED-MUX FO155 via SNMP using a management rack mount card.

- TDM multiplexer for high-/low-speed services
- Line: SFP technology
- Optional: Single fiber operation, CWDM
- Data rate: 155Mbps
- Interfaces: X.21, V.35, 10/100BaseTX, G.703/G.704
- Additional 2Mbps bus for connection of further interfaces (e.g. ISDN BRI S₀)
- Distance: Up to 80 km
- Optimal utilization of Ethernet bandwidth (147Mbps)
- SNMP Management

Technical information:

General

- Power supply: Optional redundant 115/230 V AC, 38 – 78 V DC
- Up to four link or interface modules can be installed in a 4-slot SPEED-RACKHOUSING
- 16-slot 19" shelf for the integration of up to four multiplexer

Line port

- Data rate: 155Mbps
- Slot for standard-SFP fiber optic module
- Compatible to all MSA standardized SFPs
- Multimode or Singlemode (also C/DWDM)
- Connector: LC
- Distance: Up to 80 km depending on the SFP type used

Interface port

- 2 x switched 10/100BaseTX (RJ45), VLAN bridging
- 1 x 10/100BaseTX (RJ45), bandwidth allocation 50, 70 or 100Mbps
- X.21, V.35 (external Winchester or DB25 adapter)
- E1 (G.703/G.704)
- ISDN BRI S₀ (I.430) for simulation of leased lines or PBX connections by using an additional rack mount module

Housing options

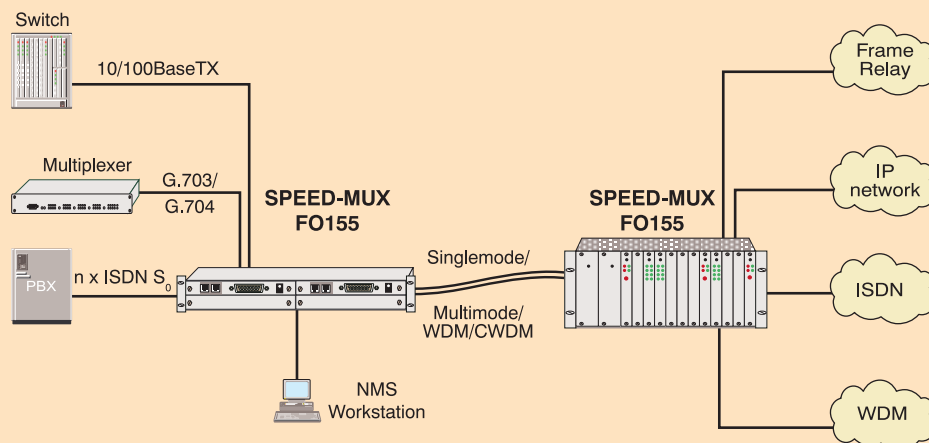
- 1-slot stand-alone housing
- 4-slot SPEED-RACKHOUSING
- SPEED-SHELF

Management

- Configuration and trouble-shooting management
- Integrated RS232 console port (RJ45)
- Settings can be configured via DIP switches
- Optional: SNMP management using an external NMS rack mount card
- Remote management with remote CLI

Example of use:

Cost-effective voice-and-data multiplexing using fiber optic lines



n x ISDN BRI S₀ and/or X.21/V.35 interfaces over fiber optic lines

